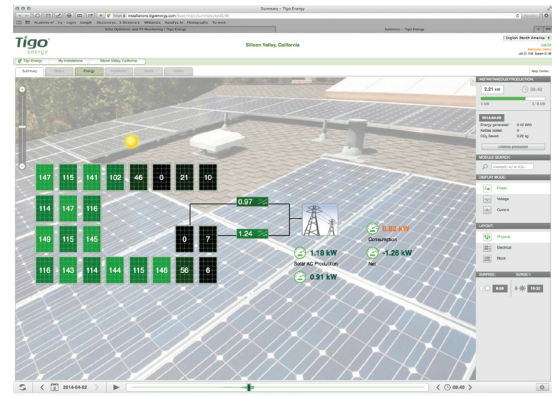


DC-DC Optimization through Impedance Matching

100% Communication

Tigo offers free monitoring for the life of your system. View individual module function and perform basic diagnosis to identify problems such as diode failure, soiling or wiring faults. Streamline your O&M process and improve your ROI with Tigo's software-as-a-service monitoring platform.

Communicate directly with your modules during an emergency with PV-Safe, module-level shut off.



20% More Energy

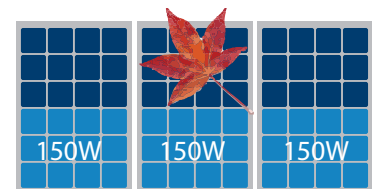
Solar panels are usually connected in series, meaning the current flows through one pathway. Even the slightest variances in power can affect the entire system.

Tigo Energy's technology allows each solar panel to operate independently. If there is mismatch from shade, soil, or any other issue, it affects that particular module only.

This results in a significant overall improvement in system performance.

Without Tigo

Current
Restriction
Total = 450W



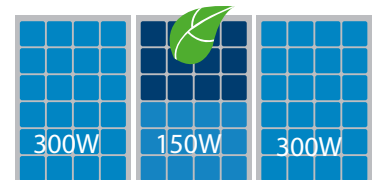
Bypass
Diode
Total = 600W



With

Tigo
energy

Total = 750W



30% Longer Strings

Tigo Energy's technology caps the Voc thus allowing more panels per string. This results in fewer components, reduces BOS costs and makes for a faster install.

